

# About Meridian's CMHC

*The CMHC program* is to assist those within Alachua, Baker, Bradford, Columbia, Dixie, Gilchrist, Hamilton, Lafayette, Levy, Nassau, Putnam, Suwannee, and Union counties the opportunity to succeed in their own community.

*The program goal* is to reengage those who were disconnected due to the COVID-19 pandemic.

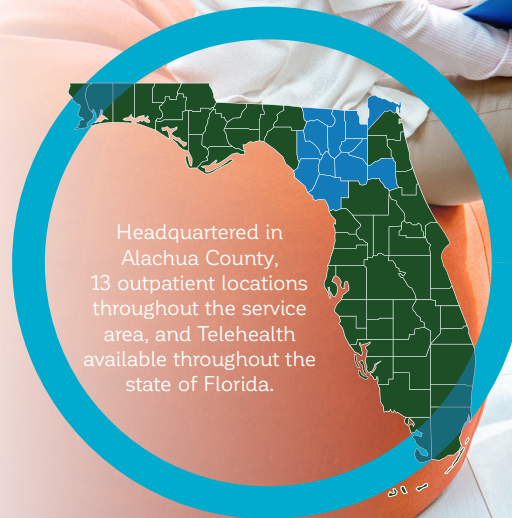
*During the treatment process*, wrap around services include medical staff.

## Wellness is within everyone's reach.



## Our Mission

To promote the health, recovery, and well-being of those affected by mental illnesses and substance use disorders through prevention, coordinated treatment, and supportive services.



Meridian Behavioral Healthcare, Inc.  
Tel: (352) 374-5600  
Toll Free: (800) 330-5615  
[mbhci.org](http://mbhci.org)



## Community Mental Health Center (CMHC)





# The CMHC aims to...

- Identify significant mental health or substance use needs
- Reduce conflict and strengthen relationships
- Improve communication skills
- Instill hope for the future
- Remove roadblocks to success in work or school
- Reduce isolation and feelings of frustration and failure

## WHO is ELIGIBLE?

Children, adolescents, and young adults with a mental health and/or substance use diagnosis with accompanying characteristics such as:

- Involvement with the Department of Juvenile Justice
- Multiple encounters with law enforcement, drug/alcohol use, and those with multiple crisis stabilization admissions
- Poor academic performance and/or suspensions



## Frequently Asked Questions

**How long can an individual be in the program for?**

Typically 3 to 6 months.

**What services can CMHC provide?**

Our team of therapists, care coordinators, peer specialists, and medical staff partner with the individual, and their families, to provide intensive therapy, resource finding, and medical support to achieve wellness.



New Clients (first time or 6+ months since last seen): **(352) 374-5600, option 2**

Returning Clients: **(352) 374-5600, option 3**

**Office Hours**  
**Monday-Friday, 7 a.m. - 6 p.m.**