

# 2006 Report to our Communities

Choice, Hope, Recovery

Meridian 

Behavioral Healthcare, Inc.  
800-330-5615 ♦ [www.mbhci.org](http://www.mbhci.org)

# Dear Friends & Stakeholders



Carol Buck, Chairperson  
Board of Directors

Meridian Behavioral Healthcare, Inc. is a private, non-profit organization that has provided community based and largely publicly funded mental health, substance abuse, and child welfare services for 34 years. Meridian is an active partner in enhancing collaborative solutions to the community's behavioral health and social service challenges. It is our vision to facilitate choice, hope, and recovery for all those whose lives we touch.

Toward that end, we provide an array of prevention, outreach, treatment, and supportive services. From July 2005 through June 2006, we served 10,766 in our treatment programs, and had contact with 8,606 through our prevention services. We served an additional 1,457 children in our child welfare case management program. Most of those we serve, 79%, are at or below federal poverty levels. Meridian provides care to those facing mental illness and/or addictive disorders across the age span; 2% of those served are over 65, and an equal percentage are under 5 years of age.

In 2005-2006, we opened the area's first Short-term Residential Treatment Program, providing community based in-patient treatment for individuals who need a supportive treatment environment for serious mental illness. The program adds a much needed in-patient resource to take the strain off of local hospitals and jails, as well as from very short-stay crisis stabilization units.

As we look forward to 2007, Meridian will be expanding jail diversion services and services to the homeless, working with our communities to address the many needs of the mentally ill and substance dependent individuals in our communities who become involved with law enforcement or are left without shelter because of their illnesses.

We will continue to partner with local government and individuals to create a community with greater choice, hope, and recovery options for the mentally ill, the substance dependent, and the victims of child maltreatment.

## Mission

To provide quality affordable behavioral healthcare and related services in partnership with our communities.

## Vision

To be a model behavioral healthcare provider and employer dedicated to our customers, employees and communities.





# Services

## SEVERE & PERSISTENT MENTAL ILLNESS

Outpatient: Counseling, Intervention, Psychiatric  
Residential: Group Homes, Supported Apartments, Housing Support  
Homeless Enrichment Liaison Program  
Case Management: Adult Mental Health, Forensic  
Family Intervention Services  
Rehabilitation Services  
Supported Employment Program

## SUBSTANCE ABUSE

Outpatient: Intervention, Day Treatment, Forensic, Opiate Treatment  
Group & Individual Therapy  
Residential  
Older Adult Treatment Program  
Aftercare  
Dependency Drug Court  
Mothers Intensive Supportive Treatment  
Co-Occurring Disorders Treatment

## CHILDRENS SERVICES

Mental Health Residential: Achievement Center, Therapeutic Foster Care  
Substance Abuse Residential: Recovery Center  
Outpatient: Counseling, Intervention, Psychiatric  
Case Management: Family Intervention  
Child Welfare: Case Management, Comprehensive Assessment  
Juvenile Drug Court  
Ropes Course

## SERVICES IN AN EMERGENCY

Crisis Stabilization Unit: Adult & Child  
Short-Term Residential Treatment Program  
Screening  
Crisis Support  
Family Crisis Intervention Team  
Detox

ALACHUA

BRADFORD

COLUMBIA

DIXIE

GILCHRIST

HAMILTON

LAFAYETTE

LEVY

PUTNAM

SUWANNEE

UNION



# Financials & Services Provided

Total Charity Care  
\$2,416,942

Total Persons Served  
Direct Services  
10,766

Total Served  
Prevention & Outreach  
8,606

Total Service  
Child Welfare  
1,457

Total Served at  
or Below Poverty  
79%

## REVENUES

State and Federal	\$ 14,881,718
County	\$ 1,247,655
Medicaid	\$ 6,740,599
Client Fees & Insurance	\$ 1,761,269
Donations	\$ 623,537
Other Revenues	\$ 810,791
<b>TOTAL REVENUES</b>	<b>\$ 26,065,579</b>

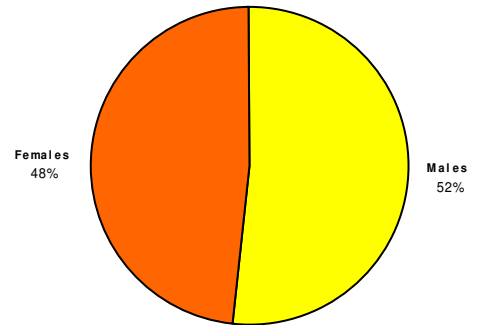
## EXPENSES

Personnel	\$ 18,383,630
Professional and Subcontracted Services	\$ 1,650,759
Facilities	\$ 1,008,774
Equipment	\$ 421,947
Travel	\$ 541,357
Medical/Pharmacy	\$ 574,597
Operating Supplies	\$ 1,168,725
Other	\$ 2,718,608
<b>TOTAL EXPENSES</b>	<b>\$ 26,468,397</b>

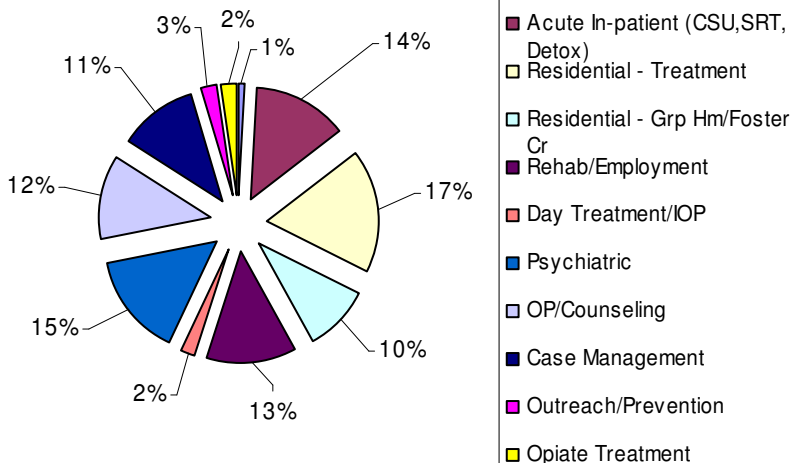
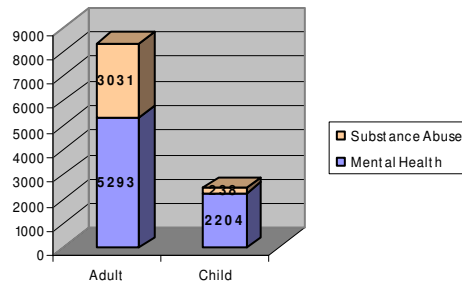
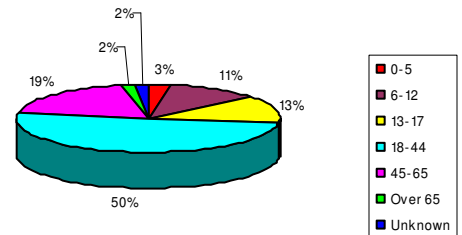
## Profit/(Loss)

**\$ (402,818)**

Gender of Persons Served FY05/06



Age of Persons Served FY05/06



# Donors

## Friends \$1 - \$500

AIG  
Allison & Mitchell Beasley  
Ami & Stephen Reed  
Brian Privitt & Jennifer Reynolds  
Cammie Edwards  
Carolyn Adcock  
Catherine Mickle  
Chad A. Reed  
Cheek Pharmacy, Inc.  
Chestnut Burial Service  
Collis C. Watson Jr.  
Delbert & Tina M. Gaddis  
Dewy H. Hatcher  
Dorothy Sperry  
Duncan Brother's Funeral Home  
Eileen Westwood  
Eric & Stacey Parker  
Florida Credit Union  
Gator Mowing  
Grady & Freddy Hires  
Hair Affair of Gainesville  
Harvey Goldstein  
James Johnson  
Jacqueline Hart-Williams  
Jim & Sinoma Brown  
John "Butch" Jones  
John Hal Chewing Jr.  
Joseph M. Dunaway  
Joyce Williams  
King's Oil & Tire  
Lakay Banks  
Law Offices of Rush & Glassman

L.E. & Marguerette Parker  
Lechia & Shane Garrison  
Leenette McMillan  
Mae Beville  
Martha & Jesse Dunnam  
Mary Jane Weaver  
Michael & Raquel Rood  
Millennium Bank  
Norman & Melody LaFlam  
Perry Roofing, Inc.  
Phillip Ottinger  
Philoron Wright  
Richard & Ariane Labelle  
Robert & Zona Haines  
Ronnie Parr  
Roslyn & Phillip Slater  
Salon 19  
Shannon & Scott Beckham  
Stephen Pennypacker  
Teresa H. Christmas  
Timothy & Melinda Lewis  
United Church of Gainesville  
Wade Raulerson Pontiac-GMC Truck

## Stars \$500 - \$999

Bosshardt Realty Services, Inc.  
Community of Christ Church  
Corner Drug Store of Gainesville, Inc.  
Deanna Waldon  
Holy Faith Catholic Church  
Holy Trinity Church  
Pauline Kirk  
Publix

## Leadership Circle

\$1000 +

Adams Rib Company  
Alachua County Board of County Commissioners  
B & B Office Systems  
Charles DeBolt  
City of Gainesville  
Cris Collinsworth  
Dawn Snipes  
Florida Food Service  
Linda Weseman  
Shands Healthcare  
Suwannee Medical Personnel  
The Doyle Foundation  
Tom & Gwen Umlauf  
Warner & Edith Weseman

## Choice, Hope, Recovery \$5,000+

Beechler Waters Printing  
City of Gainesville: CDBG Grant  
Dex Imaging  
Sunshine Broadcasting  
The Wachovia Foundation

# Accomplishments

Obtained 3-year CARF Accreditation \*

Opened 10 Short-term Residential Treatment beds \*

Opened a new Rehabilitation Services Facility \*

Obtained a Community Block Development Grant & Wachovia Foundation Grant to employ individuals with Severe and persistent mental illnesses

Opened 2 therapeutic courts in the 3<sup>rd</sup> Judicial Circuit \*

Began a Meridian Community Affairs Radio Program, \*  
airing weekly on 5 radio stations







Meridian is an active partner in enhancing collaborative solutions to our community's behavioral health and social service challenges, often working quietly and unrecognized out of respect for consumers' privacy. As mental illness and addiction come more into the public eye and are recognized as leading causes of disability with a huge economic impact, Meridian is helping spread a message of hope and seeking community support more openly.

From the earliest years of operation in the early 1970s, Meridian has provided care to North Central Florida's most vulnerable and seriously mentally ill and substance dependent adults and children. Meridian serves a 6,700 square mile region with 23 facilities, including outpatient clinics in 9 counties, and residential programs. As the only public in-patient mental health resource for 11 counties (population close to 500,000 and about 7000 sq. miles), Meridian maintains two Crisis Stabilization Units accessible within one hour from all communities served.

## Meridian Makes a Difference

That difference might be a person who has a mental illness and is able to function in society and go back to work with help from their medication and case management...or a person who has overcome their addiction and is working on getting their family back together again...or a child who is in the foster care system who is able to stay with a family in the community and not have to go into a group home. For these people, Meridian is their hope for Recovery.