



2007 ANNUAL REPORT

To Our Communities





...A SAFETY NET *For our Communities*

TOTAL CHARITY CARE PROVIDED
\$1.3 MILLION

TOTAL PERSONS ENROLLED
IN TREATMENT
12,682

TOTAL PERSONS SERVED
PREVENTION & OUTREACH
13,414

TOTAL SERVED WHO LIVE AT
OR BELOW FEDERAL POVERTY
80.37%

TOTAL MILES TRAVELLED TO
PROVIDE SERVICES
1,237,122

Former State Representative Sid Martin attends
the opening of the Sid Martin Bridge House,
Meridian's residential drug treatment center
November 1993



OUR MISSION

...to promote recovery and offer solutions to those facing mental illnesses, addictions and other social challenges

OUR VISION

...a community in which choice, hope and recovery are within everyone's reach

OUR VALUES

...to **partner** with individuals, businesses and communities balancing **efficiency** and **effectiveness** in all we do
...to have **diversity** and the right to be respected, self-governing and accountable
...the right to **choice** in services, housing and work
...the power of **hope**

A POSITION *Of Strength*

\$15.8 MILLION
SALARIES TO LOCAL ECONOMIES

\$4.02 MILLION
CONTRIBUTION TO LOCAL ECONOMIES

" I learned how to cope with my peers & staff. I learned how to control myself and how to ignore negativity and to accept the word no."

-Samuel, age 14 Achievement Center Group Home



" ...without their direction and support, our family would have suffered more than it already has. They brought forth growth, clear perception and self awareness in many of us and a greater understanding of our circumstances. They are helping us to pursue further therapy for our family to continue to improve"

-Prison Family, Family Crisis Intervention Team

Then Governor Lawton Chiles participating in
Meridian's Challenges Ropes Course
(Drug Free Communities Grant Program)
April 1991



Meridian consumers start an auto detailing
business that continues today
March 1994

Substance Abuse / Addiction

Aftercare

CARE: Coping with Addiction through
Recovery & Empowerment
Day/ Night Treatment (STAR & HOPE Programs)
Evidence Based Prevention Programs
Intensive Adult Outpatient & Intervention
Intensive Outpatient: Dual Diagnosis Program
Opiate Treatment Program (Methadone Treatment)
TASC: Treatment Alternative for Safer Communities

SERVICES *We Provide*

Children's

Substance Abuse Outpatient
Children's Case Management
Outpatient Counseling
School-Based Prevention
Sexual Abuse Treatment
Specialized Therapeutic
Foster Care & Respite

Mental Illness

Adult Case Management
Adult Outpatient Counseling
HOPE Program · Family Crisis Intervention Team
HELP: Homeless Enrichment Liaison Program
Intensive Outpatient: Dual Diagnosis Program
Psychiatric Outpatient Services
Rehabilitation & Community Re-Integration
Supported Employment, Job Coach

Inpatient

Crisis Stabilization Unit (adult & child)
Detoxification Unit (adult)
Short-Term Residential
Treatment Program (adult)

Forensic

Adult Criminal Drug Court
Dependency Drug Court
Mental Health Court
Forensic Intervention & Outreach
Juvenile Drug Court

Residential Treatment

Joyce House, Women's Group Home
MIST: Mothers' Intensive Supportive Treatment
Recovery Center, Youth Residential Treatment
Sid Martin Bridge House (adult)
Williams Manor & Transitions (adult)
Achievement Center, Youth Group Home

Outreach & Intervention

Challenges Ropes Course
Children's Intervention Program
HIV Outreach & Intervention
Homeless Enrichment Liaison
Older Adult Outreach Services

Residential / Housing

PATH Program: Progressive
Alternative to Homeless
Satellite, Sunset & Choice
Apartments (Supported Housing)



TO OUR FRIENDS *And Stakeholders*

Meridian is now completing its 35th year of service to our communities. Our doors first opened in 1972, with 90 staff and a budget of less than \$2 million. Our opening was the result of a dedicated group of community leaders from the Health Departments, the University of Florida, and local professionals who saw the opportunity created by federal staffing grants to bring much needed services to our communities. So began a tradition of service and collaboration. I am pleased to be able to look back and say that, through periods of growth and challenge, Meridian has retained its commitment to core mission while also contributing to our counties as a strong business enterprise.

Every year, Meridian serves more individuals. Our clinical programs are all licensed and accredited, staffed by a variety of skilled and dedicated professionals, including social workers, mental health and addictions professionals, psychiatrists, nurses and nurse practitioners. These professionals bring their talent and compassion to the delivery of services, which are increasingly evidenced-based. We are committed to offering care in ways that have proven their effectiveness, believing that efficiency is best gained by providing high quality care.

Meridian has also continued its 35-year tradition of collaborating with other agencies and entities in creating innovative and collaborative approaches to surmounting individual and community challenges and problems. We maintain contracts with county commissions and schools in our entire catchment area. Our housing and forensic services are accredited and, paired with our clinical programs, allow us to contribute specialized expertise to our communities as they address social issues and concerns. Our staff and clients also benefit from our relationship with the University of Florida that provides us with access to current research-derived treatment approaches while affording child fellows a community-based learning environment.

As a member of the business community, Meridian employs over 650 individuals across ten counties, providing almost \$16 million in income and benefits to our employees. In addition, our purchases of local supplies and local services add to the local economy. Because of our size and ability to be financially strong, we are able to contribute over \$1 million annually in charitable care.

We hope you will find the summary of our accomplishments and status included in this report informative. We want to extend our appreciation to our consumers, families, staff and our many community partners for their support of our work and mission over many, many years. Together, we can make a community in which choice hope and recovery are within everyone's reach.



Sinoma Brown
Chair, Board of Directors



Maggie Labarta
CEO / President

Horticulture Therapy...program helping
the elderly cope with depression
May 1994



Gator Exchange Club volunteers remove
sod to plant donated shrubs at Meridian's
Children's Crisis Stabilization Unit
April 1994



High School Students participating in red
ribbon week on Meridian's Challenges
Ropes Course
October 1993



"If I've benefited or
enhanced anyone's life
or their family's life in
our community then
I have fulfilled
my service"

-Ruth Robinson
35 years of service
at Meridian

MEETING THE NEEDS *Of Our Community*



"I was here when we
moved in. The furniture,
the phones, hanging the
drapes...Meridian is a
good company...I've been
able to grow here. After
35 years I'm still here
because it's rewarding
and I enjoy what I do"

-Sandra S. Graham
35 years of service
at Meridian





FOR THE PAST 35 Years

Meridian's history spans decades. In **1958** services began to be delivered in Alachua County through a program in the Health Department that provided consultation to school nurses. In **1962**, services to individuals about to enter or just having left State mental hospitals were added. This base was further expanded when three organizations, the Alachua County Mental Health Association, the Public Health Department and the Department of Community Psychiatry at the University of Florida became involved in the development of a Community Mental Health Center.

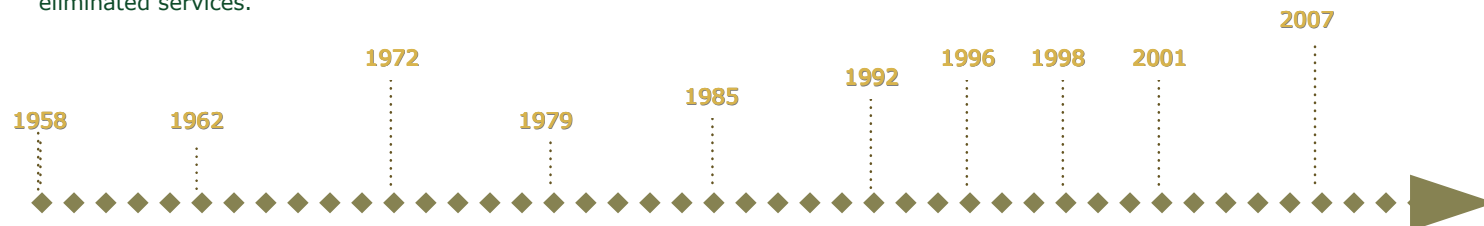
Services were expanded to a 10-county area in **1972**: Alachua, Dixie, Levy, Gilchrist, Columbia, Hamilton, Suwannee, Lafayette, Bradford, and Union Counties. In the four years that followed, funding was added that allowed the center to add services for children (including residential treatment) and older adults, as well as for those suffering from alcohol abuse.

In **1979**, the ten-county area was divided into two smaller regions with the formation of North Florida Mental Health Center, Inc. (serving the 6 northernmost counties: Columbia, Hamilton, Lafayette, Suwannee, Bradford, and Union) and Mental Health Services, Inc. (serving the remaining four counties: Alachua, Dixie, Levy, and Gilchrist). During these early times, and the ensuing 17 years, funds from state and federal governments expanded and contracted and both Centers grew and changed considerably. In **1985** Putnam County joined Bradford and Union, and in **1992**, the organization officially merged with North Florida Mental Health. Later, Baker County was added to the service area.

In the mid nineties it became clear that the resources necessary to provide services were so scarce and administrative costs so steep that a change was needed. In **1996**, Mental Health Services, Inc. and North Florida Mental Health Center, Inc. decided to merge. *Meridian Behavioral Healthcare, Inc.* became the new name for the merged agencies. The cost savings from merging administrative services and the subsequent streamlining of programs helped stabilize the financial side, thus making service continuity possible.

Since the original merger, two more changes have occurred. Putnam County decided that it wanted to provide services locally, through its own agency. They began doing so in **1998**, though Meridian continues to be Putnam's provider for crisis stabilization services. In January **2001** Baker County, which was in another contracting district for the Department of Children and Families, contracted their services to providers within that District.

As a result, Meridian now covers the same ten counties it did in 1972, offering a wide array of services and access to behavioral healthcare for the citizens of those counties. Throughout these many changes, the focus on our mission has remained. We have prioritized quality, service, and maintaining a continuum of care in times where other behavioral healthcare providers have eliminated services.



Financial Perspective

...have the financial stability and resources to support our staff and operations, to satisfy our creditors, and to invest in growth and development

Consumer Perspective

...facilitate recovery and resilience in consumers by ensuring access to quality services and consumer participation in treatment, and ensuring as many treatment options as resources allow

Internal Perspective

...implement and promote the use of up-to-date information systems throughout Meridian in order to have access to real time data and timely information, thereby enhancing decision-making, efficiency and effectiveness

Learning & Growth Perspective

...ensure there are sufficient numbers of skilled staff who can be offered satisfying work, development, and promotion opportunities, and who have the infrastructure and facilities to meet our objectives

OUR MISSION *Into Action*

- ◇ Opened a Pharmacy (Genoa Healthcare) allowing individuals the ease and convenience of obtaining prescriptions on site
- ◇ Began the Open Access Program at all sites: a walk-in clinic providing increased access to services
- ◇ Began the CARE Program: Coping with Addiction through Recovery and Empowerment - specialized 6 month intensive women's addiction treatment program
- ◇ Launched new website **www.mbhci.org**
- ◇ Promotion of Radio Show - "*The Meridian Community Affairs Show with Karen Rice*" weekly listenership of 20,000 on 5 radio stations in North Central Florida
- ◇ Enhanced technology: Opened a wireless Training Room & Conference Room for computer training of both employees and consumers as well as increased the number of computers on all sites by 30%
- ◇ Increased revenue to \$30 million
- ◇ Provided \$1.3 million in charitable care
- ◇ 8% increase in the number of individuals cared for throughout the year in treatment programs: enrolled an additional 6,722 people who were not previously receiving services
- ◇ Expanded school based services in 10 counties
- ◇ Expanded treatment options for individuals whose mental illnesses have resulted in criminal justice system involvement: Alachua Forensic Specialists, Drug Courts, Mental Health Courts



Support turns to romance at Lake City Day Treatment!
December 1996

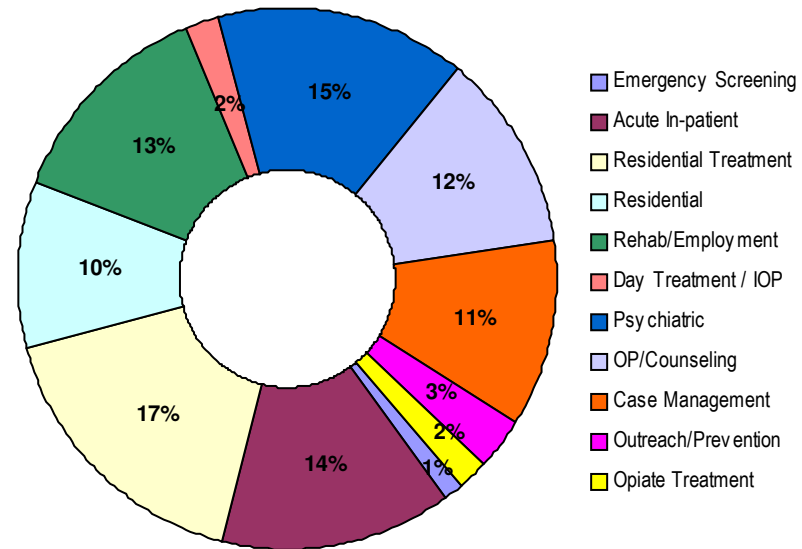
STATEMENT OF FINANCIAL POSITION

REVENUES

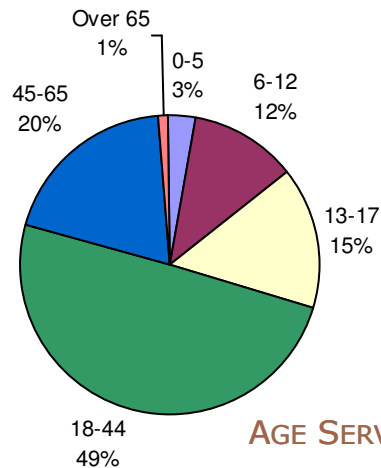
State & Federal	16,035,721
County	1,431,588
Client Fees, Insurance & Medicaid	11,033,848
Donations & Contributions	895,297
Other Revenues	921,003
Total Revenues	30,317,457

EXPENSES

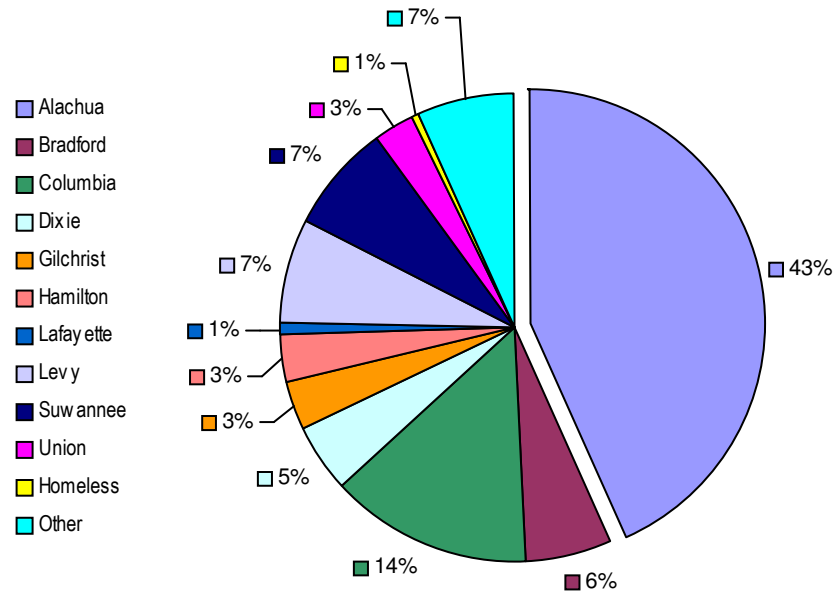
Personnel	18,612,260
Professional & Subcontracted Services	1,728,416
Facilities	1,039,390
Equipment	510,565
Travel & Professional Development	529,483
Medical / Pharmacy	523,305
Operating Supplies	1,275,931
Other	3,413,412
Total Expenses	27,632,762
Excess of Revenues Over Expenses	2,684,695
Net Assets, Beginning of Year	1,753,985
Net Assets, End of Year	\$4,438,680



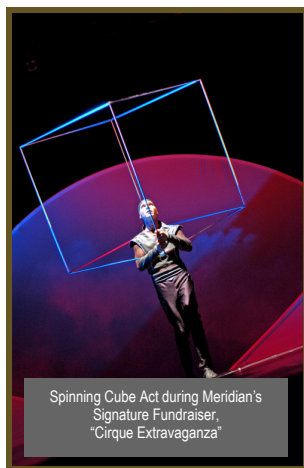
PROPORTION OF SERVICES BY TYPE



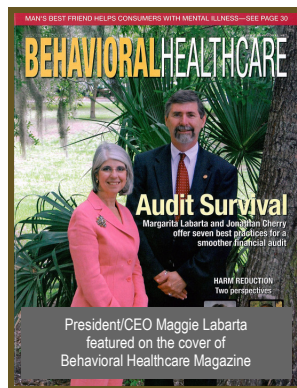
AGE SERVED



SERVICES VS. COUNTY POPULATION



Spinning Cube Act during Meridian's Signature Fundraiser, "Cirque Extravaganza"



President/CEO Maggie Labarta featured on the cover of Behavioral Healthcare Magazine



"The Meridian Community Affairs Show with Karen Rice" weekly Radio Talk Show



"A Night Without Music" Live Radio Broadcast on 5 local radio stations: a panel discussion in the aftermath of the Virginia Tech Shootings, hosted by Meridian

CLIENT SATISFACTION SURVEY RESULTS

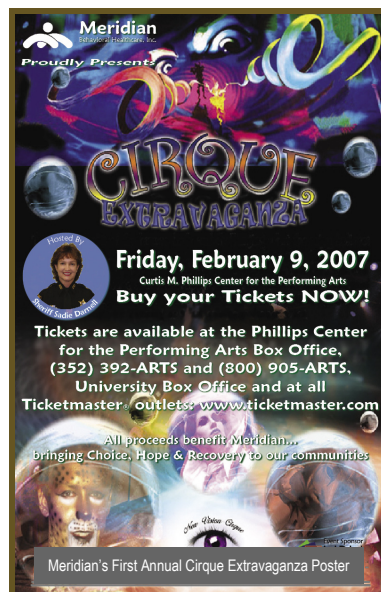
Meridian assesses client satisfaction using Mental Health Corporation of America's Survey instrument allowing us to benchmark against national peers

Meridian's ratings were "good" to "excellent" with a 2007 mean of 3.82, which is above the national mean of 3.76

★ 92% of respondents would recommend Meridian providing services to others

★ 85% indicated they are "somewhat better" or "a great deal better" after receiving services

EVENTS AWARDS



CHOICE HOPE RECOVERY AWARDS 2006

Employee of the Year

Annette Ward, support staff, Dixie County

Leadership Award

Allison Ivey, Program Director Psychosocial Rehabilitation Services, Williams Manor Residential, Lake City

Innovation Award

Chad Crosier, Program Director Family Crisis Intervention Team, Gainesville

Choice Hope Recovery Community Award

Joan & Bruce Stevens, Co-Presidents of NAMI: National Alliance on Mental Illness, Gainesville

★ Award Nomination

Meridian was nominated a "finalist" for Gainesville Area Chamber of Commerce's *Business of the Year 2006, Non Profit Category*

Meridian's Tree of Hope: honoring generous contributors and is a brilliant symbol of choice, hope & recovery





FRIENDS up to \$500

A. David & Deborah Crown
Alan Paulin
Barbara Graeber
Barbara Naylor
Bruna Herbert
Cammie Edwards
Carl & Beatrice Beer
Carla Jones
Carolyn Adcock
Columbia Youth Football Association
Cynthia Morton
Debra Dewein
Diana McPherson
Donna Jerrels
Donna Maynard
Eileen Westwood
Eric Parker
First Federal Savings Bank of Florida
Florida Museum of Natural History
Frank McCoy
FW & Wendy Person—Merrill Lynch
Harvey Goldstein
Information Technology Dept. - Meridian
Irma Phillips-Maxwell
Jacqueline Knabel
Jennifer Stull
Jerry Barshov & Ruth Keener
Jill Spellman
Joanne Gibson
John & Rosalie Tucker
Karen & Briton Jon Rice
Kevin & Sarah Coulson
Lynda Evans
Marlene Greenspan
Martha Legler
Melissa Hewitt
Melody Laflam
Michael & Carrie Carr—Merrill Lynch
Millennium Bank

DONOR Recognition

Mona Grinstead
Mr. & Mrs. Dewey Weaver
Pam Ward
Paula Stowell
Publix Supermarkets
Ronnie Parr
Roslyn Slater
Ruth Trimmer
Sandra Graham
Sara Blackford
Sharon Longworth
Smith Hulsey & Busey
St. Johns Co.
Susan Eichner
Temple of the Universe
Tina Alfieri
Zona Haines

STARS \$500 — \$999

Avera & Smith, Attorneys at Law
Bosshardt Realty
DeWayne Yates
Forest Meadows Funeral Home
Gainesville Health & Fitness Centers
Holy Faith Catholic Church
Jody Irving
Jonathan Cherry
Lighthouse Restaurant
Murray Tillis Melons
Pauline & Ross Bragdon
Sadie Darnell
The Fresh Market
Wal-Mart
Wanda Bergman

LEADERSHIP CIRCLE \$1000 +

Allen Enterprises of Gainesville, Inc.
Anitron, Inc
B & B Office Systems
Budd Media & Ilene Silverman
Charles & Marrienne DeBolt
Cris Collinsworth
Darabi & Associates, Inc.
Davis & Judi Rembert
Dex Imaging
Florida Food Service
Good Life Community Magazine
Greenberg Traurig
James Winters
J.W. & Sinoma Brown
Linda Weseman
Maggie Labarta
Mister Paper Office Supply
Paul Metts
Purvis Gray & Company
Shands Healthcare
Suwannee Medical
Tom & Gwen Umlauf
Walgreens
Warner & Edith Weseman

CHOICE, HOPE, RECOVERY

\$5000 +

Beechler Waters Printers & Mailers
City of Gainesville, CD Block Grant
HRH Insurance
Sunshine Broadcasting
The Gainesville Sun

"...Recovery has helped me control my anger and has showed me that being sober is the way to live... I've realized that I need to be responsible...Recovery may be something that I never knew that I needed but I know I have a higher purpose than just doing drugs..."

-Brian, age 16
Recovery Center Group Home

OUR 06/07 BOARD OF DIRECTORS

Sinoma Brown
Chairperson
Dixie County

DeWayne Yates
Vice Chairperson
Gilchrist County

Sharon Longworth
Secretary
Alachua County

Barbara Naylor
Treasurer
Dixie County

Nancy Bell
Levy County

Carol Bosshardt
Alachua County

Carol Buck
Gilchrist County

Lillian Cason
Columbia County

Charles DeBolt
Alachua County

Sharon Gay
Hamilton County

Herman Johnson
Bradford County

Irma Phillips-Maxwell
Alachua County

Roslyn Slater
Alachua County

Pam Ward
Lafayette County

Mary Jane Weaver
Columbia County

Virgie Cone
Emeritus

John Kuldau
Emeritus



MERIDIAN

Behavioral Healthcare, Inc.

CHOICE • HOPE • RECOVERY

**Main Office: 4300 SW 13th St
Gainesville, FL 32608**

1-800-330-5615

352-374-5600

www.mbhci.org

